

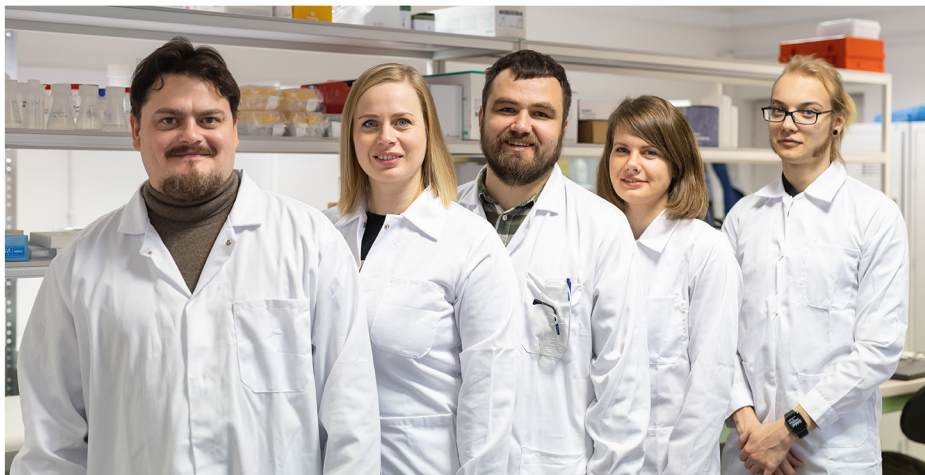
PCR solutions  
for molecular  
diagnostics



**kleverlab**<sup>®</sup>

catalogue 2025/2026

# About us



KleverLab LLC, a European biotechnological company based in Warsaw, boasts a highly qualified team of professionals with over 15 years of experience in developing and successfully implementing PCR solutions.

We place a strong emphasis on product quality and compliance with all requirements, holding ISO 9001 and 13485 certifications. We serve both B2B and B2C clients, ensuring our expertise and advanced products are accessible to organizations around the world. Our dedicated R&D department is constantly innovating and ready to develop customized solutions to meet your specific needs. The company's mission is to create a wide range of solutions tailored to the needs of our target audience. We are open to such OEM partnerships and providing customized solutions for manufacturers in molecular diagnostics, as well as delivering ready-made products for scientific research.

## Our products



### Life Science Products

#### Enzymes

- Taq polymerase and Reverse transcriptase with antibody, aptamer or chemical hot-start
- Lyo-ready or glycerol-free enzymes
- Enzymes with controlled low-level of *E.coli* DNA content
- Thermolabile UDG
- High purity Proteinase K

#### Mastermixes

- Liquid and lyo-ready forms
- Increased inhibition resistance, high sensitivity
- UDG-based technology for eliminating carry-over contamination
- Suitable for multiplexing

#### Additional reagents

- High purity dNTPs
- RNase inhibitors (lyo-ready and lyophilized forms)



### Molecular Diagnostics

#### Human, veterinary and food control PCR kits

- High sensitivity and specificity
- Increased resistance for inhibitors
- Resistance for possible carry-over contamination
- Liquid and lyophilized forms
- Approved for most popular PCR instruments
- Validated according to ISO 13485

#### KleverTest ASFV PCR kit

- Sensitivity is 1000 genome equivalent copies of ASFV DNA per 1 ml
- Specificity is 100% (validated by CISA-INIA/EURL-ASF)
- Liquid and lyophilized forms

#### Kits for nucleic acids isolation

- Magnetic beads and spin columns based technologies
- Suitable for manual and automatic modes
- All types of clinical samples

# Contents

<b>①</b>	<b>About us</b>	2
<b>②</b>	<b>Human Diagnostics</b>	4
	2.1 Urogenital Infections	4
	2.2 TORCH Infections	6
	2.3 Human Papilloma Viral Infections	8
	2.4 Herpes Viral Infections	10
	2.5 HIV and Viral Hepatitis	12
	2.6 Respiratory Infections	14
	2.7 Tick-borne Infections	16
<b>③</b>	<b>Veterinary Diagnostics</b>	18
	3.1 Swine Infections	20
	3.2 Ruminants Infections	21
	3.3 Avian Infections	22
	3.4 Pets Infections	23
	3.5 Furbearing Infections	24
	3.6 Tick-borne Infections	24
	3.7 Environmental and Water Pathogens	25
<b>④</b>	<b>Foodborne Pathogens</b>	26
	4.1 Foodborne Bacterial Pathogens	26
<b>⑤</b>	<b>NA Isolation Kits and Transport Media</b>	28
	5.1 NA Isolation Kits	28
	5.2 Transport Media	30
<b>⑥</b>	<b>Ordering</b>	31

## 2.1 Urogenital Infections

PCR tests for detecting urogenital infections are highly valuable due to their exceptional sensitivity and specificity. This allows for the rapid and accurate identification of pathogens, including both bacteria and viruses, enabling timely initiation of appropriate treatments. The use of PCR tests also helps prevent chronic or complicated forms of infections and reduces the risk of transmission to partners.

KleverTest PCR kits are designed for the qualitative detection of various urogenital pathogens, either separately or in multiplexes, from clinical samples such as swabs and smears. These kits include an endogenous internal control and offer high sensitivity and specificity. Special additives enhance resistance to inhibitors, while the presence of UDG helps eliminate potential carry-over contamination. All KleverTest kits feature fast protocols (70-90 minutes) that are compatible with most popular real-time PCR instruments.

### Benefits:

- High specificity (up to 99.9%)
- Universal protocol for all kits
- Contains UDG for eliminating possible carry-over contamination
- Validated according to ISO 13485

### Compatible instruments:

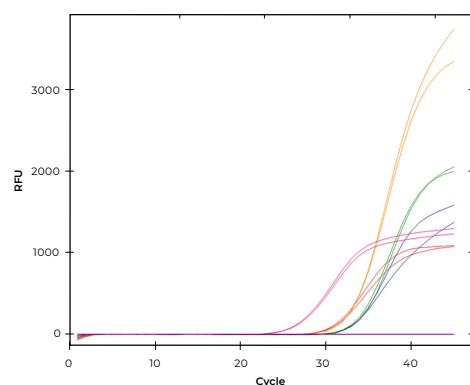
- CFX96 Systems
- Rotor-Gene Q5/6 Plex Systems
- QuantStudio 3/5 instruments
- DT-96 and DT-48 instruments

### Storage condition:

- From -24 °C to -16 °C – 1 year
- From +2 °C to +8 °C – 14 days
- 10 freeze/thaw cycles are allowed

### PCR Efficiency of KleverTest CT/TV/MG/NG PCR Kit

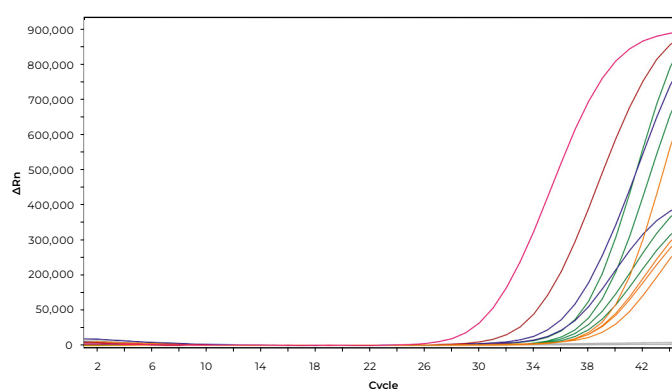
Figure 1. Results of amplification of DNA sample from reference panel



blue – IC  
green – *M. genitalium*  
orange – *C. trachomatis*  
red – *N. gonorrhoeae*  
pink – *T. vaginalis*

### PCR Efficiency of KleverTest CT PCR Kit

Figure 2. Results of amplification of quantified DNA from *Chlamydia trachomatis* strains



orange –  $2.5 \times 10^2$  copies/ml  
green –  $5 \times 10^2$  copies/ml  
blue –  $10^3$  copies/ml  
red –  $10^4$  copies/ml  
pink –  $10^5$  copies/ml

Product code	Product name	Quantitative	Control type	LOD (copies/ml)*	Pathogen	Genome type	Tests
RK-CA-100	KleverTest CA PCR Kit	–	ENDO	500	<i>Candida albicans</i>	DNA	100
RK-CT-100	KleverTest CT PCR Kit	–	ENDO	500	<i>Chlamydia trachomatis</i>	DNA	100
RK-TV-100	KleverTest TV PCR Kit	–	ENDO	500	<i>Trichomonas vaginalis</i>	DNA	100
RK-UU/UP-100	KleverTest UU/UP PCR Kit	–	ENDO	1000	<i>Ureaplasma urealiticum</i> and <i>Ureaplasma parvum</i> with differentiation	DNA	100
RK-US-100	KleverTest USpp PCR Kit	–	ENDO	1000	<i>Ureaplasma</i> spp.	DNA	100
RK-MH-100	KleverTest MH PCR Kit	–	ENDO	1000	<i>Mycoplasma hominis</i>	DNA	100
RK-MG-100	KleverTest MG PCR Kit	–	ENDO	2000	<i>Mycoplasma genitalium</i>	DNA	100
RK-GV-100	KleverTest GV PCR Kit	–	ENDO	1000	<i>Gardnerella vaginalis</i>	DNA	100
RK-NG-100	KleverTest NG PCR Kit	–	ENDO	500	<i>Neisseria gonorrhoeae</i>	DNA	100
RK-TP-100	KleverTest TP PCR Kit	–	ENDO	500	<i>Treponema pallidum</i>	DNA	100
RK-CT/MG-100	KleverTest CT/MG PCR Kit	–	ENDO	500	<i>Chlamydia trachomatis</i> and <i>Mycoplasma genitalium</i> with differentiation	DNA	100
RK-CMU-100	KleverTest CT/MG/US PCR Kit	–	ENDO	500	<i>Chlamydia trachomatis</i> , <i>Mycoplasma genitalium</i> and <i>Ureaplasma</i> spp. with differentiation	DNA	100
RK-CMUM-100	KleverTest CT/MG/US/MH PCR Kit	–	ENDO	500	<i>Chlamydia trachomatis</i> , <i>Mycoplasma genitalium</i> , <i>Ureaplasma</i> spp. and <i>Mycoplasma hominis</i> with differentiation	DNA	100
RK-CTMN-100	KleverTest CT/TV/MG/NG PCR Kit	–	ENDO	500	<i>Chlamydia trachomatis</i> , <i>Trichomonas vaginalis</i> , <i>Mycoplasma genitalium</i> and <i>Neisseria gonorrhoeae</i> with differentiation	DNA	100

\*Under isolation from 100 µl of sample

## 2.2 TORCH Infections

TORCH infections are a group of congenital infections transmitted from mother to child during pregnancy, birth, or shortly after. TORCH is an acronym for infections caused by *Toxoplasma gondii*, other agents, Rubella, Cytomegalovirus (CMV), and Herpes simplex virus (HSV).

KleverTest PCR kits are designed for the qualitative and quantitative detection of TORCH infections, either individually or in multiplex, from blood plasma samples. These kits offer high sensitivity and specificity. Special additives enhance resistance to inhibitors, and the inclusion of UDG helps prevent carry-over contamination. All KleverTest kits feature fast (70-90 minutes) protocols and are compatible with most popular real-time PCR instruments.

### Benefits:

- High specificity (up to 99.9%)
- Universal protocol for all kits
- Contains UDG for eliminating possible carry-over contamination
- Validated according to ISO 13485

### Compatible instruments:

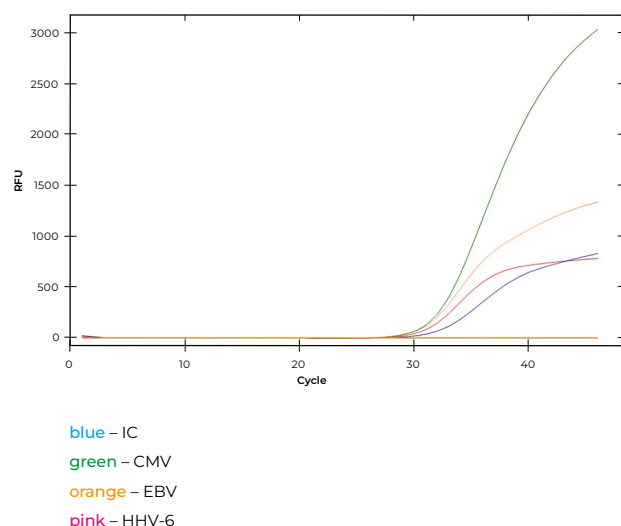
- CFX96 Systems
- Rotor-Gene Q5/6 Plex Systems
- QuantStudio 3/5 instruments
- DT-96 and DT-48 instruments

### Storage condition:

- From -24 °C to -16 °C – 1 year
- From +2 °C to +8 °C – 14 days
- 10 freeze/thaw cycles are allowed

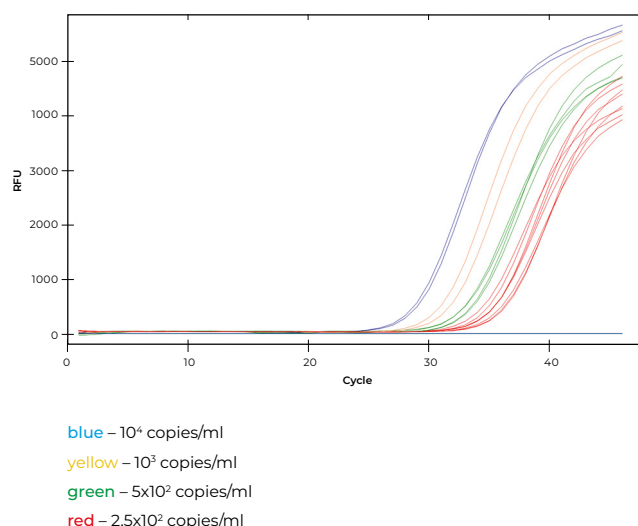
### Amplification of reference DNA by KleverTest EBV/CMV/HHV-6 PCR Kit

Figure 1. Results of amplification of DNA samples from reference panel



### Amplification of reference DNA by KleverTest TG PCR Kit

Figure 2. Results of amplification and quantification of *Toxoplasma gondii* DNA from the reference panel (Vircell)



Product code	Product name	Quantitative	Control type	LOD (copies/ml)*	Pathogen	Genome type	Tests
RK-ECH6-100	KleverTest EBV/CMV/HHV-6 PCR Kit	–	EXO	500	Epstein-Barr virus, Cytomegalovirus and Human herpes virus 6 with differentiation	DNA	100
RK-PVB19-100	KleverTest PV B19 PCR Kit	–	EXO	500	Parvovirus B19	DNA	100
RK-PVB19q-100	KleverTest PV B19 Quant PCR Kit	+	EXO	500	Parvovirus B19	DNA	100
RK-RV-100	KleverTest Rubella PCR Kit	–	EXO	500	Rubella virus	DNA	100
RK-VZV-100	KleverTest VZV PCR Kit	–	EXO	500	Varicella zoster virus	DNA	100
RK-TG-100	KleverTest TG PCR Kit	–	EXO	500	<i>Toxoplasma gondii</i>	DNA	100

\*Under isolation from 100 µl of sample

## 2.3 Human Papilloma Viral Infections

Using PCR tests to detect Human papillomavirus (HPV) is essential due to their high sensitivity and specificity. These tests enable the detection and genotyping of HPV, which is critical for screening, diagnosing, and monitoring the progression of infection. They also play a significant role in preventing cervical cancer and other HPV-related cancers.

KleverTest PCR kits are designed for the qualitative and quantitative detection of high-risk carcinogenic HPV from clinical samples, such as swabs and smears. HPV types can be analyzed in screening and/or genotyping modes. The kits include an endogenous internal control and offer high sensitivity and specificity. Special additives enhance resistance to inhibitors, while the presence of UDG helps prevent carry-over contamination. All KleverTest kits feature fast (70-90 minutes) protocols and are compatible with the most popular real-time PCR instruments.

### Benefits:

- High specificity (up to 99.9%)
- Universal protocol for all kits
- Contains UDG for eliminating possible carry-over contamination
- Validated according to ISO 13485

### Compatible instruments:

- CFX96 Systems
- Rotor-Gene Q5/6 Plex Systems
- QuantStudio 3/5 instruments
- DT-96 and DT-48 instruments

### Storage condition:

- From -24 °C to -16 °C – 1 year
- From +2 °C to +8 °C – 14 days
- 10 freeze/thaw cycles are allowed

### Amplification of synthetic DNAs of HPV 14 high risk types by KleverTest HPV 14 genotypes Quant PCR Kit

*Amplification of positive control samples*

Figure 1. Results of amplification of HPV 16/18/45 positive control

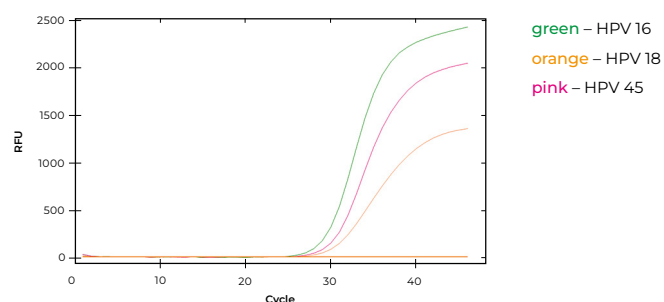


Figure 3. Results of amplification of HPV 31/33/35/39 positive control

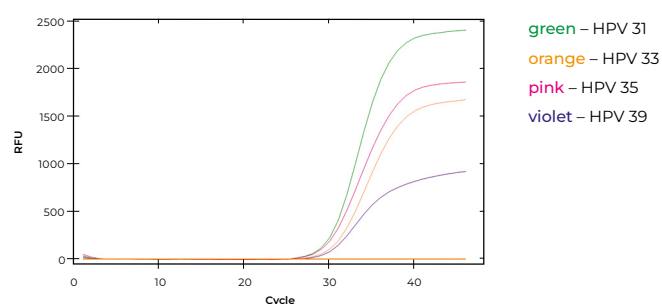


Figure 2. Results of amplification of HPV 51/52/56/58 positive control

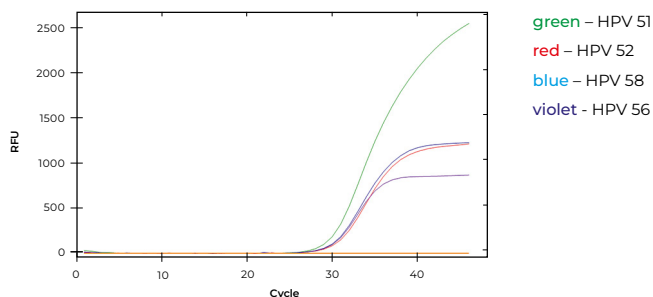
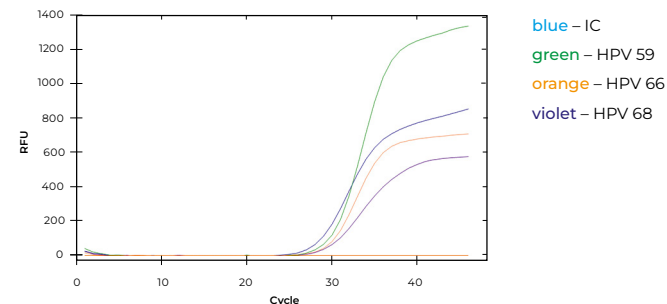


Figure 4. Results of amplification of HPV 59/66/68 positive control





Product code	Product name	Quantitative	Control type	LOD (copies/ml)*	Pathogen	Genome type	Tests
RK-HPVq-100	KleverTest HPV Screen Quant PCR Kit	+	ENDO	500	Human papillomavirus types 16, 18, 31, 33, 35, 39, 45, 51, 52, 56, 58, 59, 66, 68 and HPV types 16, 18, 45 with partial differentiation	DNA	100
RK-HPV-100	KleverTest HPV Screen PCR Kit	–	ENDO	500	Human papillomavirus types 16, 18, 31, 33, 35, 39, 45, 51, 52, 56, 58, 59, 66, 68 and HPV types 16, 18, 45 with partial differentiation	DNA	100
RK-HPV14q-25	KleverTest HPV 14 genotypes Quant PCR Kit	+	ENDO	500	Human papillomavirus types 16, 18, 31, 33, 35, 39, 45, 51, 52, 56, 58, 59, 66, 68 with differentiation	DNA	25
RK-HPV14q-100	KleverTest HPV 14 genotypes Quant PCR Kit	+	ENDO	500	Human papillomavirus types 16, 18, 31, 33, 35, 39, 45, 51, 52, 56, 58, 59, 66, 68 with differentiation	DNA	100
RK-HPV6/11/44q-100	KleverTest HPV 6/11/44 Quant PCR Kit	+	ENDO	500	Human papillomavirus types 6, 11, 44 with differentiation	DNA	100
RK-HPV16/18-100	KleverTest HPV 16/18 PCR Kit	–	ENDO	500	Human papillomavirus types 16 and 18 with differentiation	DNA	100
RK-HPV16/18q-100	KleverTest HPV 16/18 Quant PCR Kit	+	ENDO	500	Human papillomavirus types 16 and 18 with differentiation	DNA	100

\*Under isolation from 100 µl of sample

## 2.4 Herpes Viral Infections

Nine types of herpesviruses are known to primarily infect humans, at least five of which are extremely widespread across most human populations and cause common diseases: Herpes simplex virus types 1 and 2 (HSV-1 and HSV-2), which cause orolabial and genital herpes; Varicella zoster virus (VZV), the cause of chickenpox and shingles; Epstein-Barr virus (EBV), implicated in several diseases, including mononucleosis and some cancers; and Cytomegalovirus (CMV), which has been associated with mucoepidermoid carcinoma and potentially other malignancies, such as prostate and breast cancer.

PCR testing for human herpesviruses is crucial due to its high sensitivity and specificity, enabling the rapid and accurate identification of infectious agents. This allows for timely initiation of treatment, prevents disease transmission, and reduces the risk of complications.

KleverTest PCR kits are designed for the qualitative detection of various respiratory pathogens, either individually or in multiplex, from clinical samples such as swabs and smears. These kits offer high sensitivity and specificity, enhanced by special additives that increase resistance to inhibitors. The inclusion of UDG helps to prevent carry-over contamination. All KleverTest kits feature fast (70-90 minutes) protocols and are validated for use with the most popular real-time PCR instruments.

### Benefits:

- High specificity (up to 99.9%)
- Universal protocol for all kits
- Contains UDG for eliminating possible carry-over contamination
- Validated according to ISO 13485

### Compatible instruments:

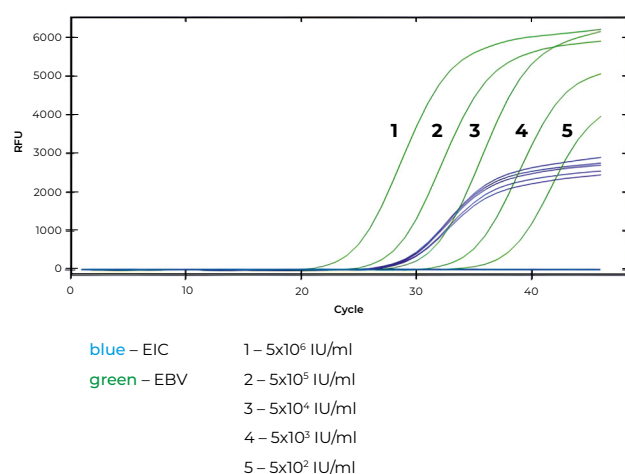
- CFX96 Systems
- Rotor-Gene Q5/6 Plex Systems
- QuantStudio 3/5 instruments
- DT-96 and DT-48 instruments

### Storage condition:

- From -24 °C to -16 °C – 1 year
- From +2 °C to +8 °C – 14 days
- 10 freeze/thaw cycles are allowed

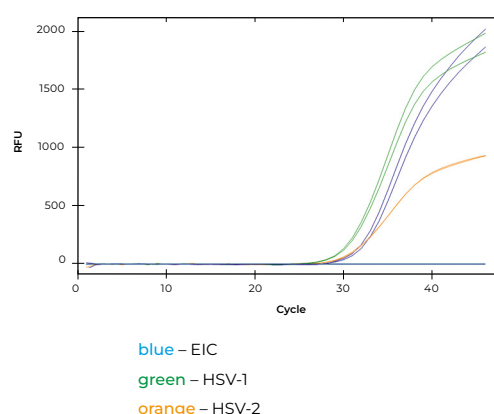
### PCR Efficiency of KleverTest EBV PCR Kit

Figure 1. Results of amplification of samples from EBV reference panel (plasma). Virus concentration in plasma is  $5 \times 10^2$  –  $5 \times 10^6$  IU/ml



### PCR Efficiency of KleverTest HSV-1/HSV-2 PCR Kit

Figure 2. Results of amplification of HSV-1 and HSV-2 reference samples (plasma)



Product code	Product name	Quantitative	Control type	LOD (copies/ml)*	Pathogen	Genome type	Tests
RK-CMV-100	KleverTest CMV PCR Kit	–	EXO	500	Cytomegalovirus	DNA	100
RK-CMVq-100	KleverTest CMV Quant PCR Kit	+	EXO	500	Cytomegalovirus	DNA	100
RK-EBV-100	KleverTest EBV PCR Kit	–	EXO	500	Epstein-Barr virus	DNA	100
RK-EBVq-100	KleverTest EBV Quant PCR Kit	+	EXO	500	Epstein-Barr virus	DNA	100
RK-HHV6-100	KleverTest HHV-6 PCR Kit	–	EXO	500	Human herpes virus 6	DNA	100
RK-HHV6q-100	KleverTest HHV-6 Quant PCR Kit	+	EXO	500	Human herpes virus 6	DNA	100
RK-HSV1/2-100	KleverTest HSV-1/HSV-2 PCR Kit	–	EXO	1000	Human herpes virus types 1 and 2 with differentiation	DNA	100
RK-HSV-100	KleverTest HSV PCR Kit	–	EXO	1000	Human herpes virus types 1 and 2 without differentiation	DNA	100

\*Under isolation from 100 µl of sample

## 2.5 HIV and Viral Hepatitis

Detection of hemotransmissible infectious diseases, such as Human immunodeficiency virus (HIV) and Hepatitis viruses, requires highly sensitive methods such as PCR testing.

KleverTest PCR kits are designed for the qualitative and quantitative detection of HIV, Hepatitis viruses types B, C and D, either separately or in multiplexes from blood plasma samples. These kits possess high sensitivity and specificity, special additives provide increased resistance to inhibitors, and the presence of UDG helps to eliminate possible carry-over contamination. All KleverTest kits have fast (70-90 minutes) and universal protocols. Our kits have been validated for use with the most popular Real-Time PCR instruments.

### Benefits:

- High specificity (up to 99.9%)
- Universal protocol for all kits
- Contains UDG for eliminating possible carry-over contamination
- Validated according to ISO 13485

### Compatible instruments:

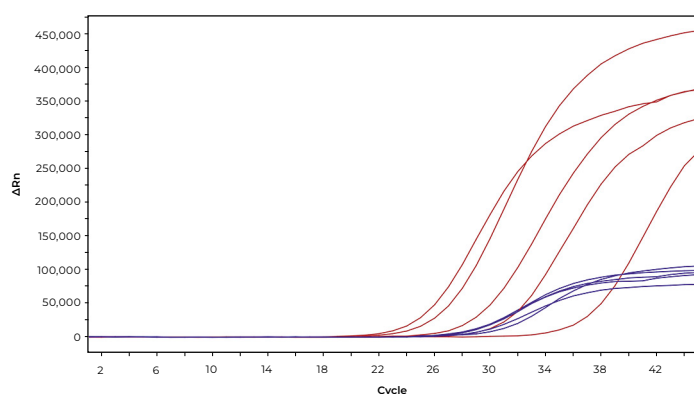
- CFX96 Systems
- Rotor-Gene Q5/6 Plex Systems
- QuantStudio 3/5 instruments
- DT-96 and DT-48 instruments

### Storage condition:

- From -24 °C to -16 °C – 1 year
- From +2 °C to +8 °C – 14 days
- 10 freeze/thaw cycles are allowed

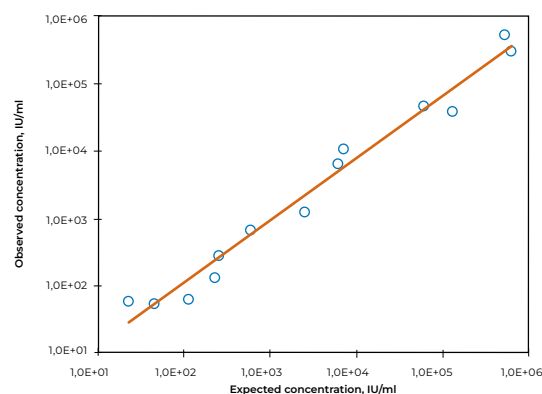
### PCR Efficiency of KleverTest HCV Quant PCR Kit

Figure 1. Results of amplification of DNA samples from reference panel



red – HCV  
blue – IC

Figure 2. Comparative analysis of KleverTest HCV Quant PCR Kit and commercial kit on reference panel



Product code	Product name	Quantitative	Control type	LOD	Pathogen	Genome type	Tests
RK-BCI-100	KleverTest HBV/HCV/HIV PCR Kit	–	EXO	HBV RNA/DNA – 50** HCV RNA – 150** HIV-1 RNA – 120* HIV-2 RNA – 600*	Hepatitis B, Hepatitis C and Human immunodeficiency viruses types 1 and 2 with differentiation	RNA/DNA	100
RK-BD-100	KleverTest HBV/HDV PCR Kit	–	EXO	HBV RNA/DNA – 50** HDV RNA – 400**	Hepatitis B and Hepatitis D viruses with differentiation	RNA/DNA	100
RK-HBV-100	KleverTest HBV PCR Kit	–	EXO	50**	Hepatitis B virus	DNA	100
RK-HBVq-100	KleverTest HBV Quant PCR Kit	+	EXO	50**	Hepatitis B virus	DNA	100
RK-HBV(R)-100	KleverTest HBV (RNA) PCR Kit	–	EXO	35**	Hepatitis B virus	RNA/DNA	100
RK-HBV(R)q-100	KleverTest HBV (RNA) Quant PCR Kit	+	EXO	35**	Hepatitis B virus	RNA/DNA	100
RK-HCV-100	KleverTest HCV PCR Kit	–	EXO	150**	Hepatitis C virus	RNA	100
RK-HCVq-100	KleverTest HCV Quant PCR Kit	+	EXO	150**	Hepatitis C virus	RNA	100
RK-HDV-100	KleverTest HDV PCR Kit	–	EXO	400**	Hepatitis D virus	RNA	100
RK-HDVq-100	KleverTest HDV Quant PCR Kit	+	EXO	400**	Hepatitis D virus	RNA	100
RK-HIV-100	KleverTest HIV PCR Kit	–	EXO	HIV-1 – 120* HIV-2 – 600*	Human immunodeficiency virus types 1 and 2	RNA	100
RK-HIVq-100	KleverTest HIV Quant PCR Kit	+	EXO	500*	Human immunodeficiency virus types 1 and 2	RNA	100

\*Copies/ml (under isolation from 100 µl of sample)

\*\*IU (under isolation from 100 µl of sample)

## 2.6 Respiratory Infections

The use of PCR tests for detecting respiratory infections is important because they provide high sensitivity and specificity, allowing for the rapid and accurate identification of infectious agents. This facilitates timely initiation of treatment, prevents disease spread, and reduces the risk of complications.

KleverTest PCR kits designed for qualitative detection of various respiratory pathogens separately or in multiplexes from clinical samples, such as swabs, smears, etc. Kits contained endogenous internal control and possessed high sensitivity and specificity. Special additives provide increased resistance to inhibitors, UDG presence help to eliminate possible carry-over contamination. All KleverTest kits have fast (70-90 minutes) and universal protocols. Our kits were validated for the most popular real-time PCR instruments.

### Benefits:

- High specificity (up to 99.9%)
- Universal protocol for all kits
- Contains UDG for eliminating possible carry-over contamination
- Validated according to ISO 13485

### Compatible instruments:

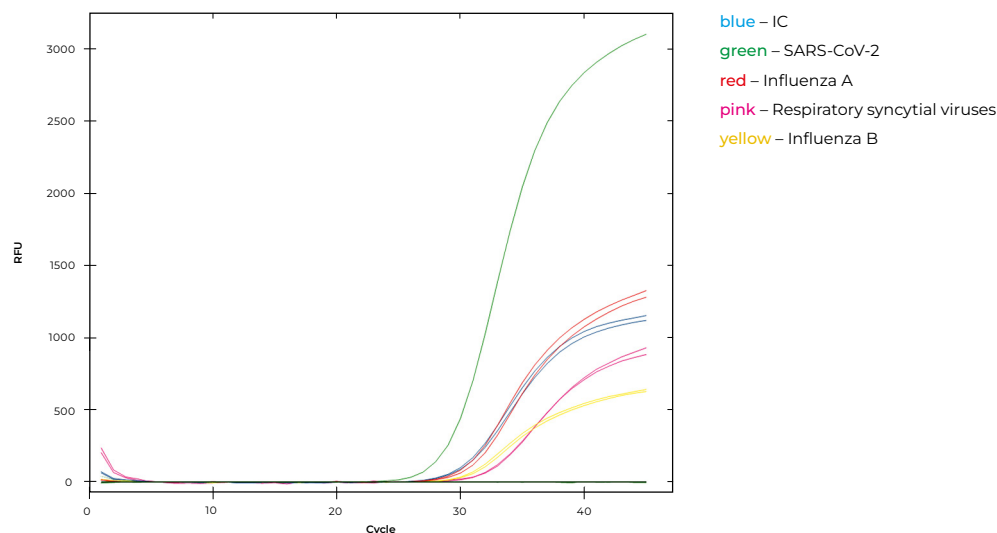
- CFX96 Systems
- Rotor-Gene Q5/6 Plex Systems
- QuantStudio 3/5 instruments
- DT-96 and DT-48 instruments

### Storage condition:

- From -24 °C to -16 °C – 1 year
- From +2 °C to +8 °C – 14 days
- 10 freeze/thaw cycles are allowed

### PCR Efficiency of KleverTest C-19/Flu/RSV PCR Kit

Figure 1. Results of amplification of DNA sample from reference panel



Product code	Product name	Quantitative	Control type	LOD (copies/ml)*	Pathogen	Genome type	Tests
RK-MTB-100	KleverTest MTB PCR Kit	–	EXO	500	Mycobacterium tuberculosis complex: <i>Mycobacterium bovis</i> , <i>Mycobacterium tuberculosis</i> , <i>Mycobacterium bovis</i> BCG, <i>Mycobacterium africanum</i> and <i>Mycobacterium microti</i>	DNA	100
RK-C19-100	KleverTest Covid-19 PCR Kit	–	ENDO	500	SARS-CoV-2 virus	RNA	100
RK-C19/Flu-100	KleverTest C-19/FluA/FluB PCR Kit	–	ENDO	500	SARS-CoV-2, Influenza A and Influenza B viruses with differentiation	RNA	100
RK-Flu-100	KleverTest FluA/FluB PCR Kit	–	ENDO	500	Influenza A and Influenza B viruses with differentiation	RNA	100
RK-Flu/RSV-100	KleverTest Flu/RSV PCR Kit	–	ENDO	500	Influenza A/B and Respiratory syncytial viruses with differentiation	RNA	100
RK-C19/Flu/RSV-100	KleverTest C-19/Flu/RSV PCR Kit	–	ENDO	500	SARS-CoV-2, Influenza A/B and Respiratory syncytial viruses with differentiation	RNA	100
RK-ABP-100	KleverTest ABP PCR Kit	–	ENDO	500	<i>Mycoplasma pneumoniae</i> and <i>Chlamydia pneumoniae</i>	DNA	100

\*Under isolation from 100 µl of sample

## 2.7 Tick-borne Infections

Tick-borne infections comprise a group of infections transmitted to humans by the bite of ticks infected with bacteria, viruses or parasites. Tick-borne infections affecting humans include: Lyme disease, relapsing fever, babesiosis, anaplasmosis, ehrlichiosis, Q fever, Tick Borne encephalitis and spotted fever among others.

The use of PCR tests for detecting Tick-borne infections is important because they provide high sensitivity and specificity, allowing for the rapid and accurate identification of infectious agents. This facilitates timely initiation of treatment, prevents disease spread, and reduces the risk of complications. KleverTest PCR kits designed for qualitative detection of various tick pathogens separately or in multiplexes from clinical samples, included ticks. Kits contained endogenous internal control and possessed high sensitivity and specificity. Special additives provide increased resistance to inhibitors, UDG presence helps to eliminate possible carry-over contamination. All KleverTest kits have fast (70-90 minutes) and universal protocols. Our kits were validated for the most popular real-time PCR instruments.

### Benefits:

- High specificity (up to 99.9%)
- Universal protocol for all kits
- Contains UDG for eliminating possible carry-over contamination
- Validated according to ISO 13485

### Compatible instruments:

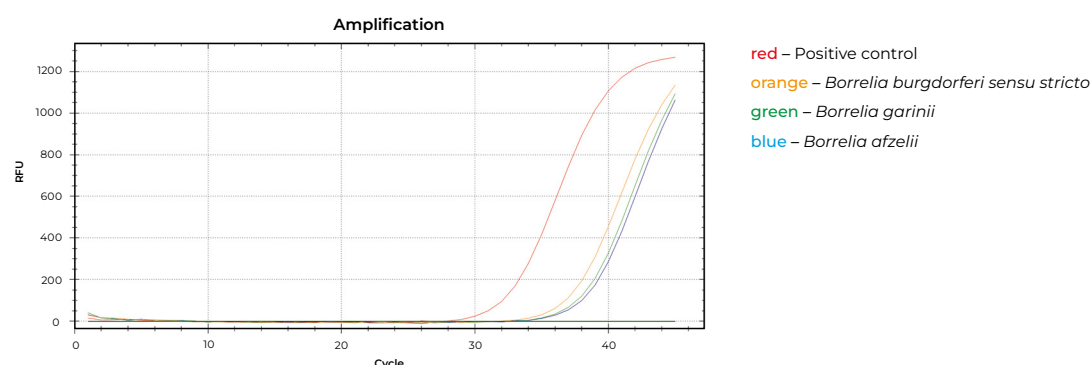
- CFX96 Systems
- Rotor-Gene Q5/6 Plex Systems
- QuantStudio 3/5 instruments
- DT-96 and DT-48 instruments

### Storage condition:

- From -24 °C to -16 °C – 1 year
- From +2 °C to +8 °C – 14 days
- 10 freeze/thaw cycles are allowed

### PCR Efficiency of KleverTest Borrelia PCR Kit

Figure 1. Results of amplification of NA isolated from *Borrelia burgdorferi sensu lato* strains ( $10^3$  copies of genome per ml)



Product code	Product name	Quantitative	Control type	LOD (copies/ml)*	Pathogen	Genome type	Tests
RK-BRS-100	KleverTest Borrelia PCR kit	–	ENDO	1000	<i>Borrelia burgdorferi sensu lato</i> ( <i>B. burgdorferi sensu stricto</i> , <i>B. garinii</i> , <i>B. afzelii</i> )	RNA/DNA	100



A 15x15 grid of dots on a white background. The dots are arranged in a regular pattern, with 15 dots in each row and 15 dots in each column, forming a square grid.

## 3.0 Veterinary Infections

KleverVet PCR Kits are an *in vitro* diagnostic kit designed for the fast qualitative and/or quantitative detection of nucleic acids of various veterinary and environmental pathogens in the laboratory practice by real-time PCR with hybridization-fluorescence detection of amplified products.

Kits contain special additives which significantly increased resistance to inhibitors. Usage of uracil-DNA glycosylase allow to avoid risk of carry-over contamination.

The KleverVet reagent kits use a rapid and simple amplification protocol, resulting in reliable assay results in 60-90 minutes with minimal risk of operator's error, significantly improving the accuracy of laboratory analyses.

KleverVet PCR Kits are suitable for the most popular real-time PCR instruments. The reagent kits are designed to perform 100 tests.

### Benefits:

- High specificity (up to 99.9%)
- Universal protocol for all kits
- Contains UDG for eliminating possible carry-over contamination
- Validated according to ISO 13485

### Compatible instruments:

- CFX96 Systems
- Rotor-Gene Q5/6 Plex Systems
- QuantStudio 3/5 instruments
- DT-96 and DT-48 instruments

### Storage condition:

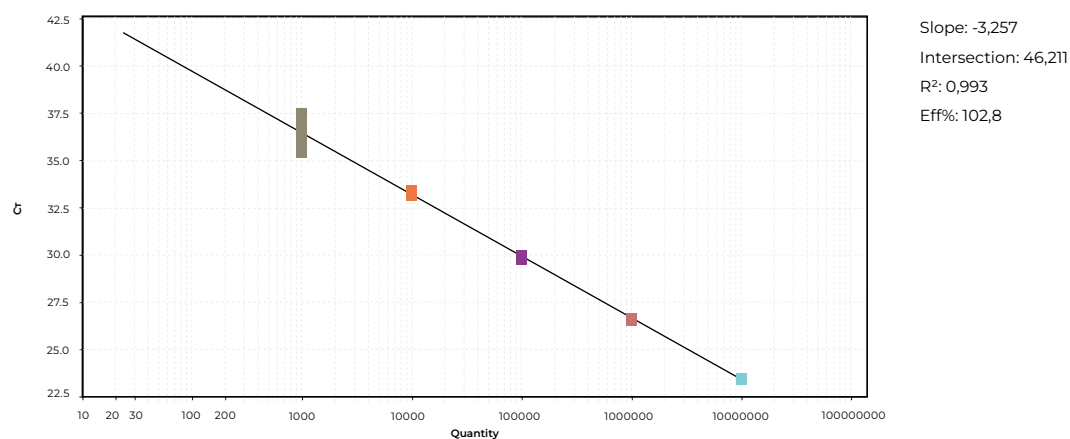
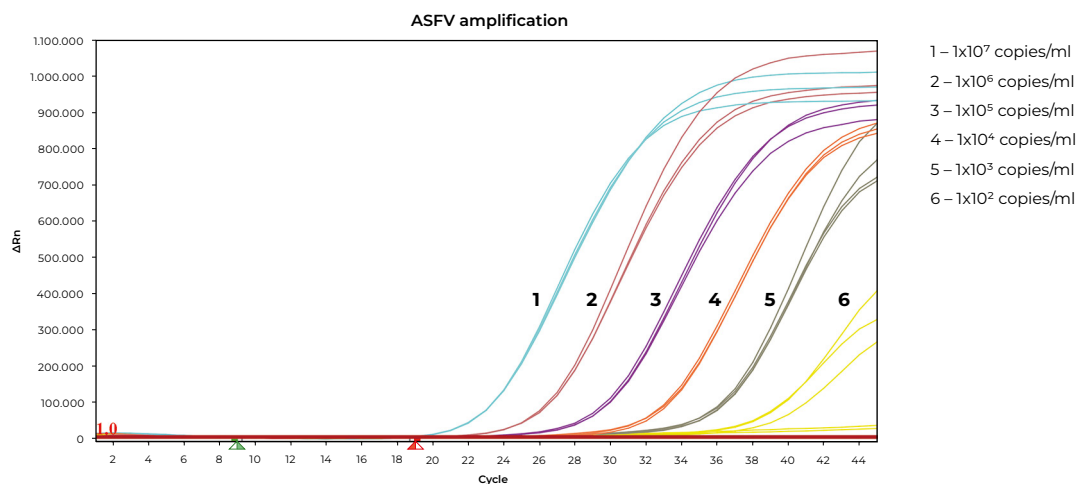
- From -24 °C to -16 °C – 1 year
- From +2 °C to +8 °C – 14 days
- 10 freeze/thaw cycles are allowed

## Validation of the KleverTest African Swine Fever Virus PCR Kit

Validation of the KleverTest ASFV PCR Kit was evaluated on 22 ASFV reference DNAs belonging to 21 of the reported p72 genotypes and showed 100% sensitivity. Kits also was validated on 268 reference samples from INIA-CISA (EDTA-blood and tissue samples from infected domestic pigs) and showed K index of 0.99 (CI 95%) according to the reference method (WOAH-UPL).

## PCR Efficiency for the diagnosis of Swine DNA Viruses: ASFV

Figures 1, 2. Results of amplification of quantified ASFV DNA by KleverTest African Swine Fever Virus detection Kit



## 3.1 Swine Infections

Category	Product code	Product name	Pathogen
Viral infections	RKV-ASF-100	KleverVet ASFV PCR Kit VALIDATED BY CISA-INIA/EURL-ASF	African swine fever virus
	RKV-ASFT-100	KleverVet ASFV Triplex PCR Kit	African swine fever virus
	RKV-AUJ-100	KleverVet Aujeszky's disease virus PCR Kit	Pseudorabies virus or Suid herpesvirus 1
	RKV-CSF-100	KleverVet CSFV PCR Kit	Classical swine fever virus, <i>Pestivirus</i>
	RKV-CSFT-100	KleverVet CSFV Triplex PCR Kit	Classical swine fever virus, <i>Pestivirus</i>
	RKV-FMD-100	KleverVet FMDV PCR Kit	<i>Aphthovirus</i>
	RKV-FLA-100	KleverVet Influenza A virus PCR Kit	Influenza A virus
	RKV-H13-100	KleverVet Influenza A (H1/H3) virus PCR Kit	Influenza A virus subtypes H1 and H3
	RKV-PC23-100	KleverVet Porcine circovirus 2/3 PCR Kit	Porcine circovirus types 2 and 3
	RKV-PPV-100	KleverVet Porcine parvovirus PCR Kit	Porcine Parvoviruses
	RKV-PRS-100	KleverVet PRRSV PCR Kit	<i>Arteriviruses</i> (Eurasian strains)
	RKV-RAB-100	KleverVet Rabies virus PCR Kit	Rabies lyssavirus
Bacterial infections	RKV-BR4-100	KleverVet Brucella AMOS PCR Kit	<i>Brucella</i> spp incl <i>B. abortus</i> , <i>B. melitensis</i> , <i>B. ovis</i> , <i>B. suis</i> identification
	RKV-BRS-100	KleverVet Brucellosis PCR Kit	<i>Brucella</i> spp.
	RKV-CS-100	KleverVet Chlamydia PCR Kit	<i>Chlamydia</i> spp, incl. <i>C. psittaci</i> , <i>C. abortus</i> , <i>C. felis</i> , <i>C. suis</i> , <i>C. pecorum</i>
	RKV-LPS-100	KleverVet Leptospirosis PCR Kit	<i>Leptospira</i> spp.
	RKV-MT/B-100	KleverVet Mycobacterium tuberculosis/bovis PCR Kit	<i>Mycobacterium tuberculosis</i> and <i>Mycobacterium bovis</i>
	RKV-MHY-100	KleverVet Mycoplasma hyopneumoniae PCR Kit	<i>Mycoplasma hyopneumoniae</i>
	RKV-PM-100	KleverVet Pasteurellosis PCR Kit	<i>Pasteurella multocida</i>
	RKV-SS-100	KleverVet Salmonellosis PCR Kit	<i>Salmonella</i> spp.
	RKV-TUB-100	KleverVet Tuberculosis PCR Kit	<i>Mycobacterium bovis</i> , <i>Mycobacterium tuberculosis</i> , <i>Mycobacterium bovis</i> BCG, <i>Mycobacterium africanum</i> and <i>Mycobacterium microti</i>
	RKV-FRT-100	KleverVet Tularemia PCR Kit	<i>Francisella tularensis</i>
	RKV-YS-100	KleverVet Yersiniosis PCR Kit	<i>Yersinia</i> spp.

## 3.2 Ruminants Infections

Category	Product code	Product name	Pathogen
Parasitic infections	RKV-TG-100	KleverVet Toxoplasmosis PCR Kit	<i>Toxoplasma gondii</i>
Viral infections	RKV-BLV-100	KleverVet Bovine leukemia virus PCR Kit	Bovine leukemia virus, <i>Retroviridae</i>
	RKV-BRD-100	KleverVet Bovine respiratory diseases PCR Kit	Bovine parainfluenza type 3 virus RNA and Bovine herpesvirus 1 DNA
	RKV-BVD-100	KleverVet Bovine viral diarrhea PCR Kit	Bovine viral diarrhea virus, <i>Pestivirus</i>
	RKV-CAE-100	KleverVet Caprine arthritis and encephalitis PCR Kit	Caprine arthritis encephalitis virus, <i>Retroviridae</i>
	RKV-C19-100	KleverVet COVID-19 PCR Kit	SARS-CoV-2
	RKV-FMD-100	KleverVet FMDV PCR Kit	<i>Aphthovirus</i>
	RKV-IBR-100	KleverVet Infectious bovine rhinotracheitis PCR Kit	Bovine herpesvirus 1
	RKV-FLA-100	KleverVet Influenza A virus PCR Kit	Influenza A virus
	RKV-LSD-100	KleverVet Lumpy skin disease PCR Kit	Lumpy skin disease virus, <i>Capripoxvirus</i>
	RKV-PI3-100	KleverVet Parainfluenza virus 3 PCR Kit	Bovine parainfluenza virus type 3, <i>Paramyxoviridae</i>
	RKV-RAB-100	KleverVet Rabies virus PCR Kit	Rabies lyssavirus
Bacterial infections	RKV-BA-100	KleverVet Bacillus anthracis PCR Kit	<i>Bacillus anthracis</i>
	RKV-BR4-100	KleverVet Brucella AMOS PCR Kit	<i>Brucella</i> spp incl <i>B. abortus</i> , <i>B. melitensis</i> , <i>B. ovis</i> , <i>B. suis</i> identification
	RKV-BRS-100	KleverVet Brucellosis PCR Kit	<i>Brucella</i> spp.
	RKV-CAL-100	KleverVet Caseous lymphadenitis PCR Kit	<i>Corynebacterium pseudotuberculosis</i>
	RKV-CS-100	KleverVet Chlamydia PCR Kit	<i>Chlamydia</i> spp, incl. <i>C. psittaci</i> , <i>C. abortus</i> , <i>C. felis</i> , <i>C. suis</i> , <i>C. pecorum</i>
	RKV-FRT-100	KleverVet Tularemia PCR Kit	<i>Francisella tularensis</i>
	RKV-LPS-100	KleverVet Leptospirosis PCR Kit	<i>Leptospira</i> spp.
	RKV-MT/B-100	KleverVet Mycobacterium tuberculosis/bovis PCR Kit	<i>Mycobacterium tuberculosis</i> and <i>Mycobacterium bovis</i>
	RKV-PM-100	KleverVet Pasteurellosis PCR Kit	<i>Pasteurella multocida</i>
	RKV-SS-100	KleverVet Salmonellosis PCR Kit	<i>Salmonella</i> spp.
	RKV-TRS-100	KleverVet Trichomoniasis PCR Kit	<i>Trichomonas</i> spp. incl. <i>Trichomonas foetus</i>
	RKV-TUB-100	KleverVet Tuberculosis PCR Kit	<i>Mycobacterium bovis</i> , <i>Mycobacterium tuberculosis</i> , <i>Mycobacterium bovis</i> BCG, <i>Mycobacterium africanum</i> and <i>Mycobacterium microti</i>
	RKV-YS-100	KleverVet Yersiniosis PCR Kit	<i>Yersinia</i> spp.

## 3.3 Avian Infections

Category	Product code	Product name	Pathogen
Viral infections	RKV-FLA-100	KleverVet Influenza A virus PCR Kit	Influenza A virus
Bacterial infections	RKV-CS-100	KleverVet Chlamydia PCR Kit	<i>Chlamydia</i> spp, incl. <i>C. psittaci</i> , <i>C. abortus</i> , <i>C. felis</i> , <i>C. suis</i> , <i>C. pecorum</i>
	RKV-LPS-100	KleverVet Leptospirosis PCR Kit	<i>Leptospira</i> spp.
	RKV-CP-100	KleverVet Ornithosis PCR Kit	<i>Chlamydia psittaci</i>
	RKV-PM-100	KleverVet Pasteurellosis PCR Kit	<i>Pasteurella multocida</i>
	RKV-SS-100	KleverVet Salmonellosis PCR Kit	<i>Salmonella</i> spp.
	RKV-FRT-100	KleverVet Tularemia PCR Kit	<i>Francisella tularensis</i>
	RKV-YS-100	KleverVet Yersiniosis PCR Kit	<i>Yersinia</i> spp.

## 3.4 Pets Infections

Category	Product code	Product name	Pathogen
Parasitic infections	RKV-DIR-100	KleverVet Dirofilaria PCR Kit	<i>Dirofilaria</i> spp.
	RKV-GIA-100	KleverVet Giardiasis PCR Kit	<i>Giardia</i> spp.
	RKV-LEI-100	KleverVet Leishmaniasis PCR Kit	<i>Leishmania</i> spp.
	RKV-TG-100	KleverVet Toxoplasmosis PCR Kit	<i>Toxoplasma gondii</i>
Viral infections	RKV-CAV1/2-100	KleverVet Canine adenovirus 1/2 PCR Kit	Canine adenovirus types 1 and 2 with differentiation
	RKV-CAV1-100	KleverVet Canine adenovirus 1 PCR Kit	Canine adenovirus type 1
	RKV-CAV2-100	KleverVet Canine adenovirus 2 PCR Kit	Canine adenovirus type 2
	RKV-CDV-100	KleverVet Canine distemper virus PCR Kit	Canine distemper virus, or <i>Morbillivirus canis</i>
	RKV-CCoV-100	KleverVet Canine enteric coronavirus PCR Kit	Canine enteric coronavirus
	RKV-CHV-100	KleverVet Canine herpesvirus PCR Kit	Canine herpesvirus or Canine alphaherpesvirus 1
	RKV-FPV-100	KleverVet Feline panleukopenia virus PCR Kit	Feline parvovirus or Feline panleukopenia virus
	RKV-CPIV-100	KleverVet Canine parainfluenza virus PCR Kit	Canine parainfluenza virus, <i>Orthomixoviridae</i>
	RKV-CPV-100	KleverVet Canine parvovirus PCR Kit	Canine parvovirus
	RKV-C19-100	KleverVet COVID-19 PCR Kit	SARS-CoV-2
	RKV-FCV-100	KleverVet Feline calicivirus PCR Kit	Feline calicivirus
	RKV-FCoV-100	KleverVet Feline coronavirus PCR Kit	Feline coronavirus
	RKV-FIV-100	KleverVet Feline immunodeficiency virus PCR Kit	Feline immunodeficiency virus
	RKV-FLV-100	KleverVet Feline leukemia virus PCR Kit	Feline leukaemia virus
	RKV-FVR-100	KleverVet Feline viral rhinotracheitis PCR Kit	Feline alpha herpesvirus 1
	RKV-FLIV-100	KleverVet FLV/FIV PCR Kit	Feline leukaemia virus, Feline immunodeficiency virus
	RKV-RAB-100	KleverVet Rabies virus PCR Kit	Rabies lyssavirus
Bacterial infections	RKV-CS-100	KleverVet Chlamydia PCR Kit	<i>Chlamydia</i> spp, incl. <i>C. psittaci</i> , <i>C. abortus</i> , <i>C. felis</i> , <i>C. suis</i> , <i>C. pecorum</i>
	RKV-FRT-100	KleverVet Tularemia PCR Kit	<i>Francisella tularensis</i>
	RKV-HEM-100	KleverVet Hemoplasmosis PCR Kit	<i>Candidatus Mycoplasma haemominutum</i> , <i>Candidatus Mycoplasma turicensis</i> and <i>Mycoplasma haemofelis</i>
	RKV-LPS-100	KleverVet Leptospirosis PCR Kit	<i>Leptospira</i> spp.
	RKV-PM-100	KleverVet Pasteurellosis PCR Kit	<i>Pasteurella multocida</i>
	RKV-SS-100	KleverVet Salmonellosis PCR Kit	<i>Salmonella</i> spp.
	RKV-TRS-100	KleverVet Trichomoniasis PCR Kit	<i>Trichomonas</i> spp. incl. <i>Trichomonas foetus</i>
	RKV-YS-100	KleverVet Yersiniosis PCR Kit	<i>Yersinia</i> spp.

## 3.5 Furbearing animals Infections

Category	Product code	Product name	Pathogen
Parasitic infections	RKV-DIR-100	KleverVet Dirofilaria PCR Kit	<i>Dirofilaria</i> spp.
Viral infections	RKV-ADV-100	KleverVet Aleutian disease virus PCR Kit	Aleutian disease virus or Carnivore amdpaprovovirus 1
	RKV-C19-100	KleverVet COVID-19 PCR Kit	SARS-CoV-2
	RKV-RAB-100	KleverVet Rabies virus PCR Kit	Rabies lyssavirus
Bacterial infections	RKV-FRT-100	KleverVet Tularemia PCR Kit	<i>Francisella tularensis</i>
	RKV-LPS-100	KleverVet Leptospirosis PCR Kit	<i>Leptospira</i> spp.
	RKV-PM-100	KleverVet Pasteurellosis PCR Kit	<i>Pasteurella multocida</i>
	RKV-SS-100	KleverVet Salmonellosis PCR Kit	<i>Salmonella</i> spp.

## 3.6 Tick-borne Infections

Category	Product code	Product name	Pathogen
Mixed infections	RKV-TIC-100	KleverVet Tick-borne diseases PCR Kit	<i>Anaplasma</i> spp., <i>Ehrlichia</i> spp., <i>Borrelia</i> spp., <i>Babesia</i> spp. and Tick-borne encephalitis virus with differentiation
Parasitic infections	RKV-BAB-100	KleverVet Babesiosis PCR Kit	<i>Babesia</i> spp.
Viral infections	RKV-TBEV-100	KleverVet TBEV PCR Kit	Tick-borne encephalitis virus
Bacterial infections	RKV-AES-100	KleverVet Anaplasmosis/Ehrlichiosis PCR Kit	<i>Anaplasma</i> spp., <i>Ehrlichia</i> spp.
	RKV-BS-100	KleverVet Borreliosis PCR Kit	<i>Borrelia</i> spp.



## 3.7 Environmental and Water Pathogens

Category	Product code	Product name	Pathogen
Bacterial infections	RKV-HYG-100	KleverVet Hygiene PCR Kit	<i>Bacillus anthracis</i> , <i>Vibrio cholerae</i> , <i>Francisella tularensis</i>
	RKV-LGP-100	KleverVet <i>Legionella pneumophila</i> PCR Kit	<i>Legionella pneumophila</i>
	RKV-VCH-100	KleverVet <i>Vibrio cholerae</i> PCR Kit	<i>Vibrio cholerae</i>
	RKV-YS-100	KleverVet Yersiniosis PCR Kit	<i>Yersinia</i> spp.

## 4.1 Foodborne Bacterial Pathogens

Foodborne pathogens (e.g. viruses, bacteria, parasites) are biological agents that can cause a foodborne illness event. Most common foodborne germs causing illness are: *Salmonella* spp, *Listeria monocytogenes*, *Norovirus*, *Clostridium perfringens*, *Escherichia coli*, *Staphylococcus aureus* and *Campylobacter*. The use of PCR tests for detecting foodborne pathogens is important because they provide high sensitivity and specificity, allowing for the rapid and accurate identification of infectious agents. This facilitates timely initiation of treatment, prevents disease spread, and reduces the risk of complications.

KleverTest PCR kits designed for qualitative detection of various foodborne pathogens from animal, food or enriched cultural samples. Kits possessed high sensitivity and specificity. Special additives provide increased resistance to inhibitors, UDG presence help to eliminate possible carry-over contamination. All KleverTest kits have fast (70-90 minutes) and universal protocols. Our kits were validated for the most popular real-time PCR instruments.

### Benefits:

- High specificity (up to 99.9%)
- Universal protocol for all kits
- Contains UDG for eliminating possible carry-over contamination
- Validated according to ISO 13485

### Compatible instruments:

- CFX96 Systems
- Rotor-Gene Q5/6 Plex Systems
- QuantStudio 3/5 instruments
- DT-96 and DT-48 instruments

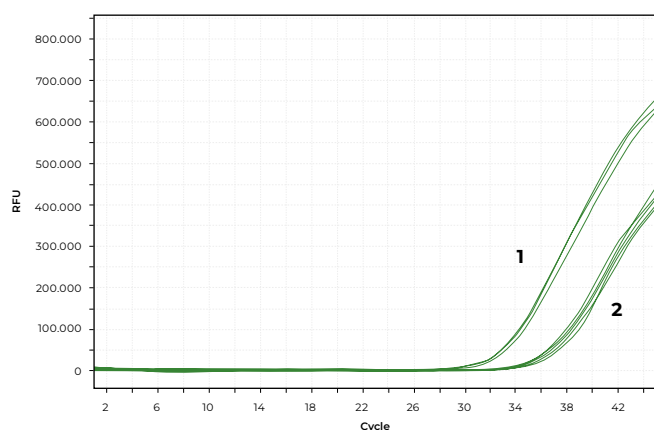
### Storage condition:

- From -24 °C to -16 °C – 1 year
- From +2 °C to +8 °C – 14 days
- 10 freeze/thaw cycles are allowed

### PCR Efficiency of KleverTest kits for detecting foodborne pathogen

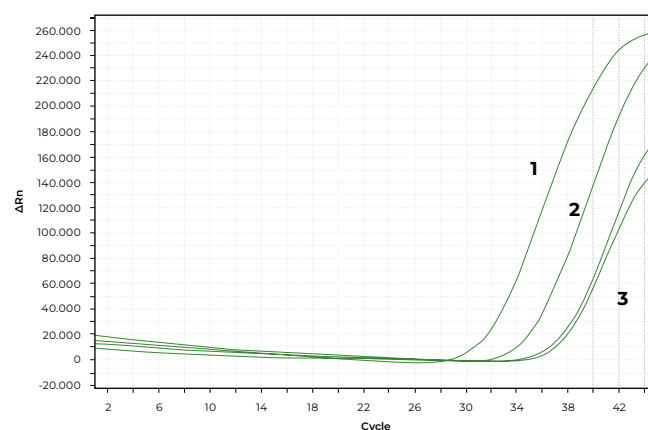
Limits of detection (LOD) for the kits is estimated to be  $10^3$  genome equivalent copies of DNA per 1 ml of sample (95% confidence interval). LOD was evaluated on quantified DNA from verified *Listeria monocytogenes* (Figure 1) and *Salmonella enterica* (Figure 2) cell cultures

Figure 1.



1 –  $10^6$  copies/ml  
2 –  $10^3$  copies/ml

Figure 2.



1 –  $10^5$  copies/ml  
2 –  $10^4$  copies/ml  
3 –  $10^3$  copies/ml

Product code	Product name	Quantitative	Control type	LOD (copies/ml)*	Pathogen	Genome type	Tests
RKF-SYSC-100	KleverTest Bacterial Gastroenteritis PCR Kit	–	EXO	1000	<i>Salmonella</i> spp., <i>Yersinia</i> spp., <i>Shigella</i> spp. / enteroinvasive <i>E. coli</i> (EIEC) and <i>Campylobacter</i> spp.	DNA	100
RKF-SS-100	KleverTest <i>Salmonella</i> spp. PCR Kit	–	EXO	1000	<i>Salmonella</i> spp.	DNA	100
RKF-LM-100	KleverTest <i>Listeria monocytogenes</i> PCR Kit	–	EXO	1000	<i>Listeria monocytogenes</i>	DNA	100

\*Under isolation from 100 µl of sample

## 5.1 DNA & RNA Isolation Kits

List of KleverLab products for nucleic acid purification include kits based on magnetic beads, spin columns or co-precipitation technologies. It allows to purify DNA/RNA both in manual mode (with help of magnetic rack or centrifuge for single tubes 1.5 - 2.0 ml) and in automatic mode using most popular robotic stations (KingFisher Flex instruments, Allsheng instruments, etc.). Level of NA recovery is dependent upon sample type and typically greater than 75%. Isolated nucleic acids are suitable for further molecular biological studies, including qPCR and RT-PCR.

### Benefits:

- NA extraction purity  $A_{260}/A_{280} \sim 1.7-2.2^*$
- NA recovery > 75%\*
- Validated according to ISO 13485

*\*depending on the sample*

### Storage condition:

- RT (< +25°C) – 1 year

Product code	Product name	Technology	NA type	Number of samples	
RKI-PMS-B-100	PuriMag S Total DNA/RNA Isolation Kit. Version B	Magnetic beads	Total DNA/RNA	100	
RKI-PMS-E-100	PuriMag S Total DNA/RNA Isolation Kit. Version E	Magnetic beads	Total DNA/RNA	100	
RKI-PMS-64PM	PuriMag S Total DNA/RNA Isolation Kit. Version Auto 64PM	Magnetic beads	Total DNA/RNA	64	
RKI-PMS-96P	PuriMag S Total DNA/RNA Isolation Kit. Version Auto 96P	Magnetic beads	Total DNA/RNA	96	
RKI-PMP-B-100	PuriMag P Total DNA/RNA Isolation Kit. Version B	Magnetic beads	Total DNA/RNA	100	
RKI-PMP-E-100	PuriMag P Total DNA/RNA Isolation Kit. Version E	Magnetic beads	Total DNA/RNA	100	
RKI-PMP-64PM	PuriMag P Total DNA/RNA Isolation Kit. Version Auto 64PM	Magnetic beads	Total DNA/RNA	64	
RKI-PMP-96P	PuriMag P Total DNA/RNA Isolation Kit. Version Auto 96P	Magnetic beads	Total DNA/RNA	96	
RKI-PMH-B-100	PuriMag H Total DNA/RNA Isolation Kit. Version B	Magnetic beads	Total DNA/RNA	100	
RKI-PMH-E-100	PuriMag H Total DNA/RNA Isolation Kit. Version E	Magnetic beads	Total DNA/RNA	100	
RKI-PMV-E-100	PuriVet Total DNA/RNA Isolation Kit. Version E	Magnetic beads	Total DNA/RNA	100	
RKI-PSS-100	PuriSpin S Total DNA/RNA Isolation Kit	Spin columns	Total DNA/RNA	100	
RKI-PP-100	PuriPrep Total DNA/RNA Isolation Kit	Co-precipitation	Total DNA/RNA	100	

## Efficiency of Cytomegalovirus DNA isolation from plasma by PuriMag P Total DNA/RNA Isolation Kit

Figure 1. Results of amplification of Cytomegaloviruses DNA isolated from reference CMV Verification Panel (Exact Diagnostic, USA). Initial virus concentration in plasma is  $4 \times 10^2 - 4 \times 10^6$  IU/ml

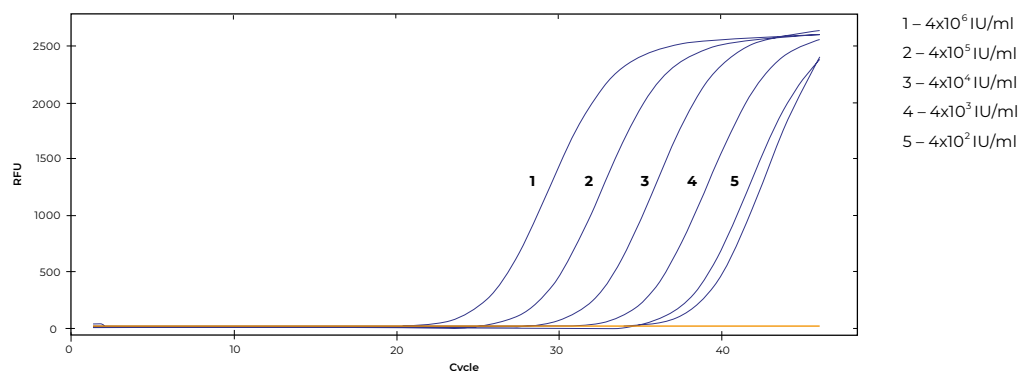


Table 1. List of products

	Handling	Compatible instruments	Sample type	Comments
	Manual/Auto	All types of automatic stations		Ethanol and isopropanol supplied separately
	Manual/Auto	All types of automatic stations		-
	Auto	Auto-Pure Mini and analogs	• Mucosal swabs, scrapes, smears, urine etc.	Supplied in 96-well plates
	Auto	KingFisher Flex, Auto-Pure 96 and analogs		Supplied in 96-well plates
	Manual/Auto	All types of automatic stations		Ethanol and isopropanol supplied separately
	Manual/Auto	All types of automatic stations	• Blood plasma, serum etc	-
	Auto	Auto-Pure Mini and analogs	• Low-copy samples of mucosal swabs, scrapes, smears, urine etc.	Supplied in 96-well plates
	Auto	KingFisher Flex, Auto-Pure 96 and analogs		Supplied in 96-well plates
	Manual/Auto	All types of automatic stations	• Low-copy samples of blood plasma, serum etc.	Ethanol and isopropanol supplied separately
	Manual/Auto	All types of automatic stations		
	Manual/Auto	All types of automatic stations	• Homogenates of muscle tissue • Whole blood, plasma / serum • Fecal swabs • Smears and mucosal swabs, saliva, urine, conjunctival discharge, cerebrospinal fluid • Arthropods • Water and feed/forage samples	Approved for veterinary propose
	Manual	-	• Mucosal swabs, scrapes, smears, urine etc.	
	Manual		• Mucosal swabs, scrapes, smears, urine etc (including low-copy samples) • Blood plasma, serum etc (including low-copy samples) • Sperm	

## 5.2 Transport Media

Transport Media is a ready-to-use sterile buffered saline solution intended for the transportation and storage of swabs and discharges collected from the urogenital tract, throat, rectum, and erosive or ulcerative lesions of human skin and mucous membranes. It is used for the subsequent analysis of the material for various infections by polymerase chain reaction (PCR). The Transport Media contains preservatives and stabilizing agents that prevent the growth of nonspecific microflora and premature cell lysis, providing long-term stability of microbial nucleic acids across a wide temperature range. Transport Media may also contain mucolytic agents, which depolymerize mucins and other polymeric components of mucus or sputum, ensuring effective and homogeneous mixing of clinical material with the transport medium.

Product code	Product name	Quantity, ml	Type of isolated DNA/RNA
R-TM-1	Transport medium	1 x 0,75	DNA & RNA
R-TM-25	Transport medium	25 x 0,75	DNA & RNA
R-TM-100	Transport medium	100 x 0.75	DNA & RNA
R-TMM-1	Transport medium with mucolytic agent	1 x 0,75	DNA & RNA
R-TMM-25	Transport medium with mucolytic agent	25 x 0,75	DNA & RNA
R-TMM-100	Transport medium with mucolytic agent	100 x 0.75	DNA & RNA

# Ordering

## How to place an order?

- You can place an order using our website **www.kleverlab.eu**
- To place an order, you can also write to our email **info@kleverlab.eu**
- If you have additional questions about ordering products, you can dial our phone number **+48 573 966 831**

## Required information

The application must include the following information about the buyer

- Customer full name
- Billing address
- Shipping address
- Phone number
- For VAT payers in EU: VAT number
- Product name or catalog SKU, quantity

## Shipment

All shipments will be arranged by courier shipping services. Orders are confirmed generally within 1 business day after receipt. In most cases orders are shipped within 1 to 3 business days.

## Payment options

KleverLab accepts payments by:

- Direct bank transfer (proforma/invoice)
- Card payment (available payment cards Visa, Visa Electron, Mastercard, MasterCard Electronic, Maestro), based on invoice or for orders placed through our e-shop [www.kleverlab.eu/products](http://www.kleverlab.eu/products)
- PayPal

## Customized solutions

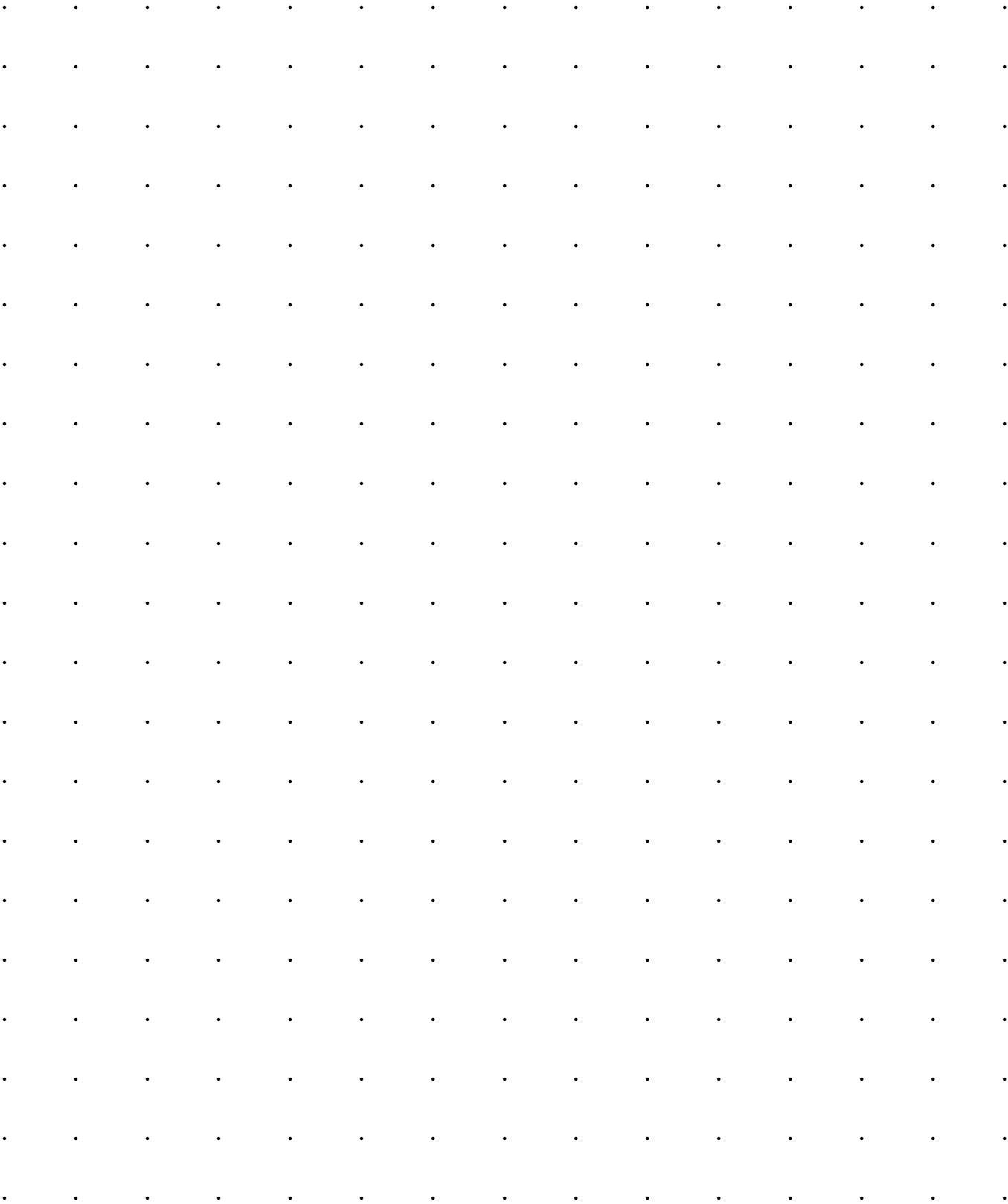
Our catalogs includes standard products. We are flexible and committed to meeting your needs, and may be able to offer OEM products, bulk products, customized packings and formulations. If you have specific requirements and can't find the best solution in our catalog, please contact us.

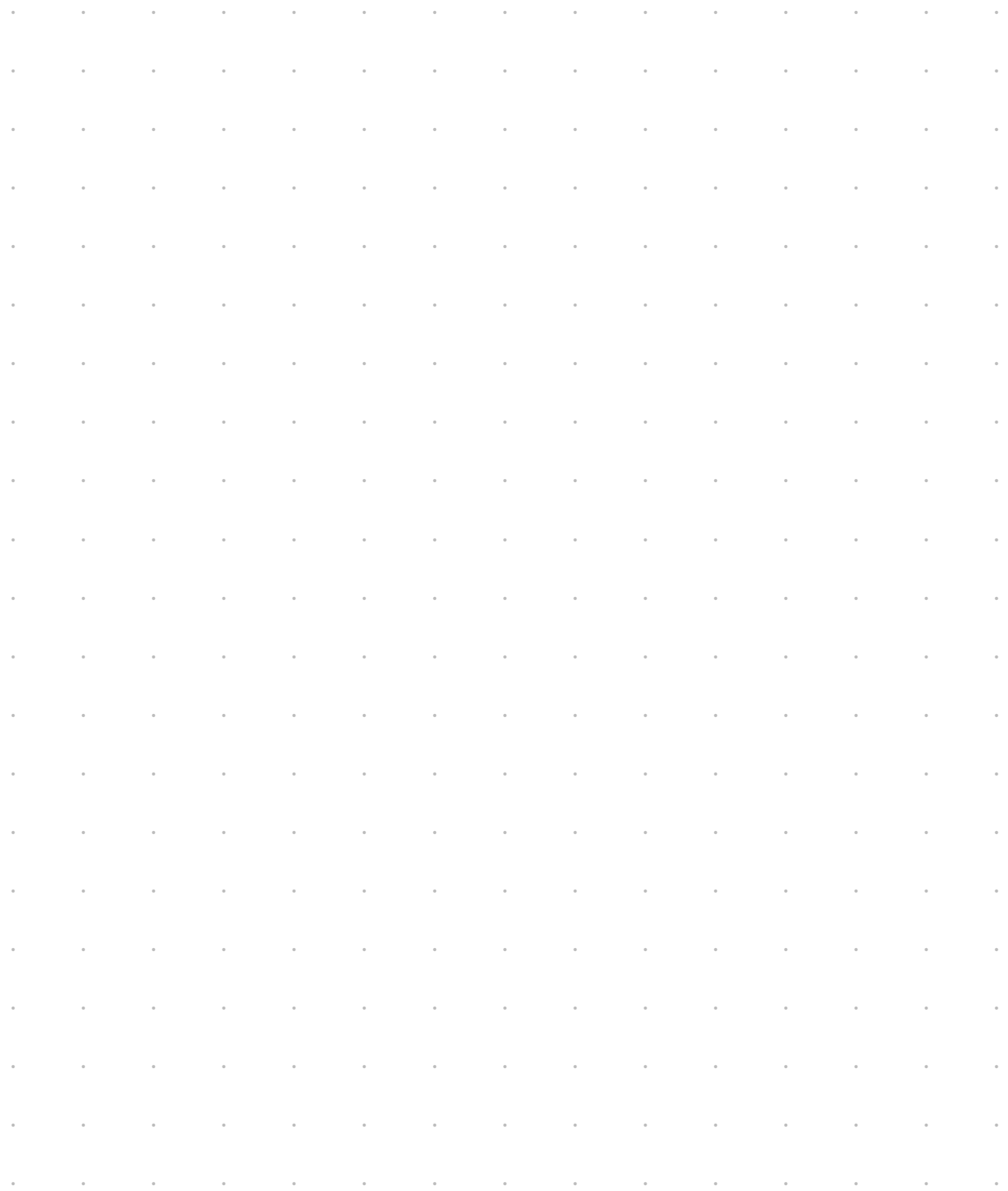
## Free samples

KleverLab provides free samples of our most product range, which allows our customers to thoroughly test our products.

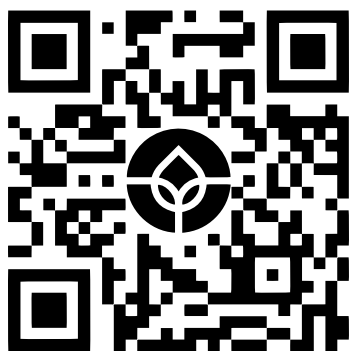








## Contact us



### **KleverLab LLC**

Warsaw, Poland, Przecławska st. 5, 03-879

phone: +48 573 966 831

info@kleverlab.eu

VAT EU: PL5252844757

[www.kleverlab.eu](http://www.kleverlab.eu)



European Funds  
for Smart Economy



Republic  
of Poland

Co-funded by the  
European Union



**Poland.**  
**Business Forward**